



Single Spring Seal US 1507/1508



APPLICATIONS:

- VISCOUS & ARDUOUS DUTIES
- CRYSTALLIZING & SOLIDIFYING MEDIA
- ABRASIVE SLURRIES UPTO MODERATE CONCENTRATIONS
- HEAT TRANSFER LIQUIDS UPTOMODERATE TEMPERATURES

FEATURES:

- STURDY & RUGGED DESIGNRELIABLE PERFORMANCE
- BI-DIRECTIONAL POSITIVE DRIVE FITS ON ANSI, ISO & DIN PUMPS
- EASY TO INSTALL
- AVAILABLE IN CARTRIDGE DESIGN

MATERIALS:

- METAL PARTS : SS316
- ELASTOMERS : VITON, AFLAS, EPR, PTFE, FFKM, STV, GFT
- ROTARY FACE : SiC, TC, CARBON
- STATIONARY FACE : SiC, TC, CERAMIC





UNIQUE SEAL

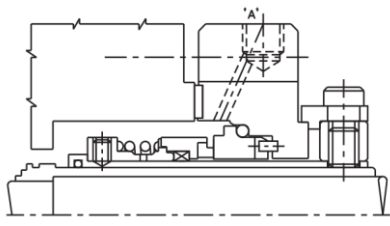
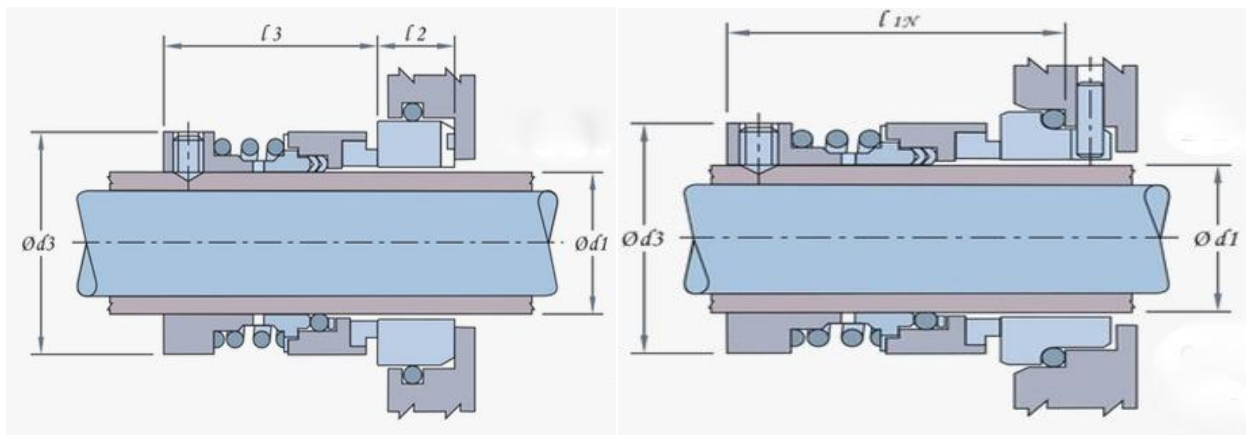
Engineering Co.

OPERATING RANGE

PRESSURE
UPTO 16 Kg

TEMPERATURE
- 20° C TO 280° C
DEPENDING UPON
ELASTOMER

SPEED
2900 rpm



CARTRIDGE DESIGN



Dimensions (in mm):

d1	d3	I2	I3		d1	d3	I2	I3
22.22	36.6	11.1	36.0		53.97	69.8	14.3	56.0
25.4	39.7	12.7	39.5		57.15	73.0	14.3	56.0
28.57	42.9	12.7	39.5		60.32	77.0	14.3	56.0
31.75	46.2	12.7	39.5		63.5	80.8	14.3	56.0
34.92	49.2	12.7	44.5		66.67	86.2	15.9	66.0
38.1	52.4	12.7	44.0		69.85	89.4	15.9	65.0
41.27	55.7	12.7	44.0		73.02	92.5	15.9	65.0
44.45	60.0	12.7	49.0		76.2	95.7	15.9	65.0
47.62	63.2	12.7	49.0		79.37	100.1	15.9	74.0
50.8	66.4	12.7	46.0		82.55	104.5	15.9	74.0

d1	d3	I1N		d1	d3	I1N
25.0	39.7	50.0		53.0	69.8	70.0
28.0	42.9	50.0		55.0	73.0	70.0
30.0	46.2	50.0		58.0	73.0	70.0
32.0	46.2	50.0		60.0	77.0	70.0
33.0	49.2	55.0		63.0	80.8	70.0
35.0	49.2	55.0		65.0	86.2	80.0
38.0	52.4	55.0		68.0	89.4	80.0
40.0	55.7	55.0		70.0	89.4	80.0
43.0	60.0	60.0		75.0	95.7	80.0
45.0	60.0	60.0		80.0	100.1	90.0
48.0	63.2	60.0				
50.0	66.4	60.0				

